



Greenfields Prospectus 2025-2026

Dream, Believe,
Achieve

Greenfields School
Graig Y Saeson
Forge Road
Newport
NP10 8AT

Tel: 01633 259019

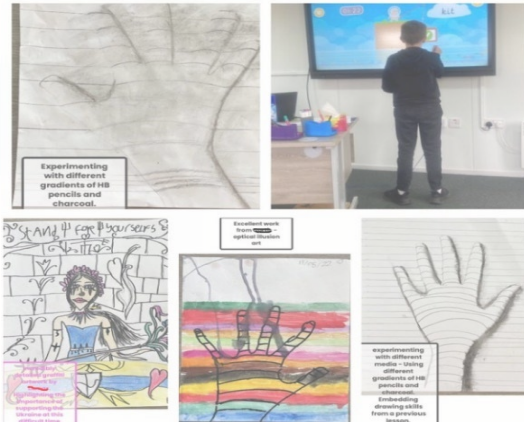
Admin E-mail: school.admin@caretech-uk.com

Headteacher: Ms. Creslyn Singh: BSoc Sc (Psychology and Criminology), PGCE, NASENCo, MA Education and Leadership, NPQSL, NPQH

Deputy Headteacher: Mr Rhys Redman: BSc Sport & Physical Education, PGCE Physical Education, MA Education, NPQH

Regional Education Lead, CareTech Education Services:

Mr Rob Mcconomy: English Bachelor of Education Degree with Honours, Qualified Teacher Status, National Award for SENCo



Contents:

Our School

Welcome

Mission Statement

Our Aims

The Learning Environment

Our Therapeutic Approach

The Placement

Admission Process

Curriculum

Education Team

Academic Calendar

Where we are

This prospectus is written in accordance with Standard 6: The provision of information, Independent Schools Standards (Wales) Regulations 2024

Welcome to Greenfields– Newport

Set in beautiful Newport, Greenfields is a nurturing, independent co-educational setting where the individual child is at the heart of everything we do.

We provide bespoke, meaningful education for pupils in Key Stages 2, 3, and 4, within a supportive and inclusive learning environment. Our provision is tailored to meet the needs of pupils with Social, Emotional and Mental Health (SEMH) challenges.

We recognise that every pupil is unique yet equal, and our dedicated staff team is committed to treating each learner with compassion, understanding, and respect. We pride ourselves on creating a safe space where pupils feel supported and encouraged to thrive.

Our well-structured curriculum addresses not only academic and vocational learning, but also social development—helping pupils achieve the best possible outcomes in line with their Statement of Educational Needs, Individual Development Plan, or Education Health Care Plan.

At Greenfields, we believe every child deserves the opportunity to reach their full potential through resilience-building, self-regulation, and trusting relationships. We support our pupils to flourish—boosting attainment, self-esteem, and making learning fun.

Creslyn Singh

Headteacher

Greenfields is an independent school, registered with the Welsh Assembly for learners aged 9 to 16 years old with emotional and behavioural difficulties as well as additional needs.

Education offered at Greenfields is individualised and tailored educationally to meet the needs of each learner.

Our Aims and Mission

Every day is extraordinary, underpins everything that we do here at Greenfields. We endeavour to use innovative practice to make learning inspirational, engaging, and relevant. Preparing learners for the future by providing a sustainable, outstanding educational experience where all students realise, pursue, and achieve their full potential, enabling them to thrive as adults.



Aims

Promote a culture where pupils feel safe, secure and have a voice.

Help and encourage pupils to take responsibility for themselves and their actions.

Provide pupils with appropriate specialist support and interventions.

Provide pupils with individualised academic and therapeutic learning plans which focus on the development of:

Cognition and learning; social interaction and play; and emotional and behavioural development.

Increase pupil's self-esteem, self-regulation and independence.

Help pupils develop positive relationships with others.

Provide pupils with the independence to prepare them for life once they move on to college or the world of work.

Provide a broad, balanced and relevant curriculum that meets each student's needs and focuses on Linguistic, Mathematical, Scientific,

Technological, Human and Social, Physical,

Aesthetic and Creative education.

Know and recognise our pupil's strengths through robust base lining and assessment, rigorous monitoring, and celebrating small steps of progress.

Provide pupils with the skills to keep themselves safe.

Provide all pupils with a high-quality education regardless of their background, gender, sexuality, religion or race.

Work in partnership with parents, carers and other professionals as an effective multidisciplinary team.

At Greenfields, we provide a small, nurturing environment for learners with social, emotional and mental health (SEMH) needs, many of whom have Statements of Educational Needs or Education, Health and Care Plans. We understand that our learners often arrive with interrupted educational histories and a wide range of abilities—from those working at very low levels of literacy and numeracy to those who are confident and proficient.

Our ethos is built on equality, respect, and positive regard for every learner. We believe that relationships are the foundation of success, and our teaching and support staff act as positive role models, creating a culture of trust and belonging. We use therapeutic approaches and innovative strategies to make learning safe, engaging, and relevant, enabling pupils to feel secure enough to learn and grow.

We celebrate every success—however small—because progress matters. Through structured boundaries, positive reinforcement, and reflective practice, we help learners take responsibility for their actions and develop the skills to make better choices. Our reward systems, praise, and enrichment opportunities encourage learners to strive for excellence while feeling valued.

Our curriculum is individualised and holistic, mapped to each learner’s needs and aspirations. It combines academic achievement, vocational pathways, and social development, preparing pupils for adulthood with resilience, independence, and confidence. We work in partnership with families, carers, local authorities, and agencies, ensuring that every learner is supported in the best possible way.

At Greenfields, we want to provide an outstanding, therapeutic education that empowers every learner to realise their full potential, thrive as an adult, and believe that every day is extraordinary.

The Learning Environment

At Greenfields we offer a calm and friendly learning environment where pupils are able to grow in confidence and flourish. Class sizes are small and all pupils have access to autism friendly environments, attachment aware staff and calming spaces.

As a specialist provision, pupils are provided with a communication friendly environment with specific safe spaces in order to support their sensory needs, opportunities for regulation, a reduction in anxiety and increased confidence to engage. The curriculum also provides pupils with regular opportunities for community exploration, which can support those with SEMH in the development of social skills, transitioning and transferring skills in context.

Therapeutic Approaches at Greenfields

At Greenfields, therapeutic practice underpins everything we do. Our aim is to create a safe, nurturing environment where learners can build trusting relationships and feel secure enough to learn and grow. We recognise that many of our pupils have experienced disrupted educational journeys and present with a range of social, emotional, and behavioural needs.

From the outset, initial assessments help us identify each learner's developmental, social, and academic needs. This enables us to design a bespoke provision that supports progress not only in learning but also in emotional regulation and resilience.

We work closely with parents, carers, and external professionals, including local authorities and specialist services such as CAMHS, to ensure that every pupil receives the right level of support. Our approach is grounded in the principles of regulation, relationship, and reasoning, and guided by the values of playfulness, acceptance, curiosity, and empathy (PACE).

Through this therapeutic framework, we strive to help learners develop confidence, independence, and the skills they need to thrive—both in school and beyond.

Placement and Admission Process

Admissions to Greenfields follow a structured referral process in partnership with local authorities, parents, and carers. We gather previous educational history and any existing plans such as IDPs, IEPs, or EHCPs to understand each learner's needs.

On arrival, learners follow a transition plan and complete baseline and diagnostic assessments within the first few weeks. This helps us tailor provision, set SMART targets, and monitor progress effectively.

Each learner is supported by a key tutor, who oversees pastoral care and integration into the school community. Learners access an individualised timetable in small groups, with nurture support available where needed.

We maintain a secure learner file including:

IDP / IEP / EHCP documentation

Baseline assessments

Timetable and targets

Progress tracking and review records



Our aim is to provide a safe, structured environment where learners can re-engage with education, develop social and emotional skills, and work towards positive outcomes.

Our Curriculum at Greenfields

We embrace the principles of the Curriculum for Wales, ensuring that our provision is purposeful, flexible, and relevant to the needs of our learners. Our curriculum aims to support pupils to become:

Ambitious, capable learners, ready to learn throughout life

Enterprising, creative contributors, prepared for life and work

Ethical, informed citizens, of Wales and the wider world

Healthy, confident individuals, ready to lead fulfilling lives



Learning is linked to the Areas of Learning and Experience (AoLE) and adapted to reflect each pupil's stage of development and their Individual Development Plan (IDP) or Education Health and Care Plan (EHCP). We provide opportunities for inclusion, creativity, and engagement through small group teaching and personalised timetables.

Our approach promotes pupil voice, respects the principles of the UNCRC, and encourages learners to influence decisions about their learning. We also work closely with families and professionals to shape experiences that are positive and meaningful.

Learners typically access up to 25 hours of education per week, with transition plans in place for those returning to learning after a break. Teaching groups are small (up to five learners) and organised by key stage and compatibility, ensuring a safe and supportive environment.

The curriculum is individualised, creative, innovative and flexible.

Education Team for 2025 - 2026

Green fields

Pathway to a brighter future



Meet the Team at Greenfields School
2025-2026



Mrs Singh
Headteacher/ALNCo/
DDSP



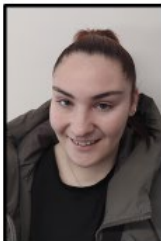
Mr Redman
Deputy Head/
DSP



Mrs. Sylvia Joslin
Administrator



Miss Hale
Expressive Arts
Teacher/DDSP



Mrs. Williams
Learning Support
Assistant



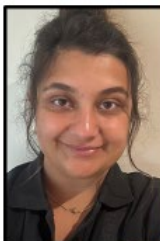
Mr Herring
Health and Wellbeing
Teacher



Mrs Giles
Literacy and Humanities
Teacher



Mrs Ghosh
Maths and Science
Teacher



Mrs Hrehova
Learning Support
Assistant



Mrs Keva
Domestic Assistant

Academic Calendar 2025-2026



Greenfields School Term Dates

2025 to 2026

September 2025						
M	T	W	T	F	S	S
1	2	3	4	5	6	7
8	9	10	11	12	13	14
15	16	17	18	19	20	21
22	23	24	25	26	27	28
29	30					

October 2025						
M	T	W	T	F	S	S
		1	2	3	4	5
6	7	8	9	10	11	12
13	14	15	16	17	18	19
20	21	22	23	24	25	26
27	28	29	30	31		

November 2025						
M	T	W	T	F	S	S
					1	2
3	4	5	6	7	8	9
10	11	12	13	14	15	16
17	18	19	20	21	22	23
24	25	26	27	28	29	30

December 2025						
M	T	W	T	F	S	S
1	2	3	4	5	6	7
8	9	10	11	12	13	14
15	16	17	18	19	20	21
22	23	24	25	26	27	28
29	30	31				

January 2026						
M	T	W	T	F	S	S
				1	2	3
4	5	6	7	8	9	10
11	12	13	14	15	16	17
18	19	20	21	22	23	24
25	26	27	28	29	30	31

February 2026						
M	T	W	T	F	S	S
						1
2	3	4	5	6	7	8
9	10	11	12	13	14	15
16	17	18	19	20	21	22
23	24	25	26	27	28	

March 2026						
M	T	W	T	F	S	S
						1
2	3	4	5	6	7	8
9	10	11	12	13	14	15
16	17	18	19	20	21	22
23	24	25	26	27	28	29
30	31					

April 2026						
M	T	W	T	F	S	S
			1	2	3	4
5	6	7	8	9	10	11
12	13	14	15	16	17	18
19	20	21	22	23	24	25
26	27	28	29	30		

May 2026						
M	T	W	T	F	S	S
				1	2	3
4	5	6	7	8	9	10
11	12	13	14	15	16	17
18	19	20	21	22	23	24
25	26	27	28	29	30	31

June 2026						
M	T	W	T	F	S	S
1	2	3	4	5	6	7
8	9	10	11	12	13	14
15	16	17	18	19	20	21
22	23	24	25	26	27	28
29	30					

July 2026						
M	T	W	T	F	S	S
		1	2	3	4	5
6	7	8	9	10	11	12
13	14	15	16	17	18	19
20	21	22	23	24	25	26
27	28	29	30	31		

August 2026						
M	T	W	T	F	S	S
					1	2
3	4	5	6	7	8	9
10	11	12	13	14	15	16
17	18	19	20	21	22	23
24	25	26	27	28	29	30
31						

School Holidays

INSET (5)

Other school closures/bank holidays

Academic Calendar 2026-2027

Greenfields School Term Dates

2026 to 2027

September 2026						
M	T	W	T	F	S	S
	1	2	3	4	5	6
7	8	9	10	11	12	13
14	15	16	17	18	19	20
21	22	23	24	25	26	27
28	29	30				

October 2026						
M	T	W	T	F	S	S
			1	2	3	4
5	6	7	8	9	10	11
12	13	14	15	16	17	18
19	20	21	22	23	24	25
26	27	28	29	30	31	

November 2026						
M	T	W	T	F	S	S
						1
2	3	4	5	6	7	8
9	10	11	12	13	14	15
16	17	18	19	20	21	22
23	24	25	26	27	28	29
30						

December 2026						
M	T	W	T	F	S	S
	1	2	3	4	5	6
7	8	9	10	11	12	13
14	15	16	17	18	19	20
21	22	23	24	25	26	27
28	29	30	31			

January 2027						
M	T	W	T	F	S	S
				1	2	3
4	5	6	7	8	9	10
11	12	13	14	15	16	17
18	19	20	21	22	23	24
25	26	27	28	29	30	31

February 2027						
M	T	W	T	F	S	S
1	2	3	4	5	6	7
8	9	10	11	12	13	14
15	16	17	18	19	20	21
22	23	24	25	26	27	28

March 2027						
M	T	W	T	F	S	S
1	2	3	4	5	6	7
8	9	10	11	12	13	14
15	16	17	18	19	20	21
22	23	24	25	26	27	28
29	30	31				

April 2027						
M	T	W	T	F	S	S
			1	2	3	4
5	6	7	8	9	10	11
12	13	14	15	16	17	18
19	20	21	22	23	24	25
26	27	28	29	30		

May 2027						
M	T	W	T	F	S	S
					1	2
3	4	5	6	7	8	9
10	11	12	13	14	15	16
17	18	19	20	21	22	23
24	25	26	27	28	29	30
31						

June 2027						
M	T	W	T	F	S	S
	1	2	3	4	5	6
7	8	9	10	11	12	13
14	15	16	17	18	19	20
21	22	23	24	25	26	27
28	29	30				

July 2027						
M	T	W	T	F	S	S
			1	2	3	4
5	6	7	8	9	10	11
12	13	14	15	16	17	18
19	20	21	22	23	24	25
26	27	28	29	30	31	

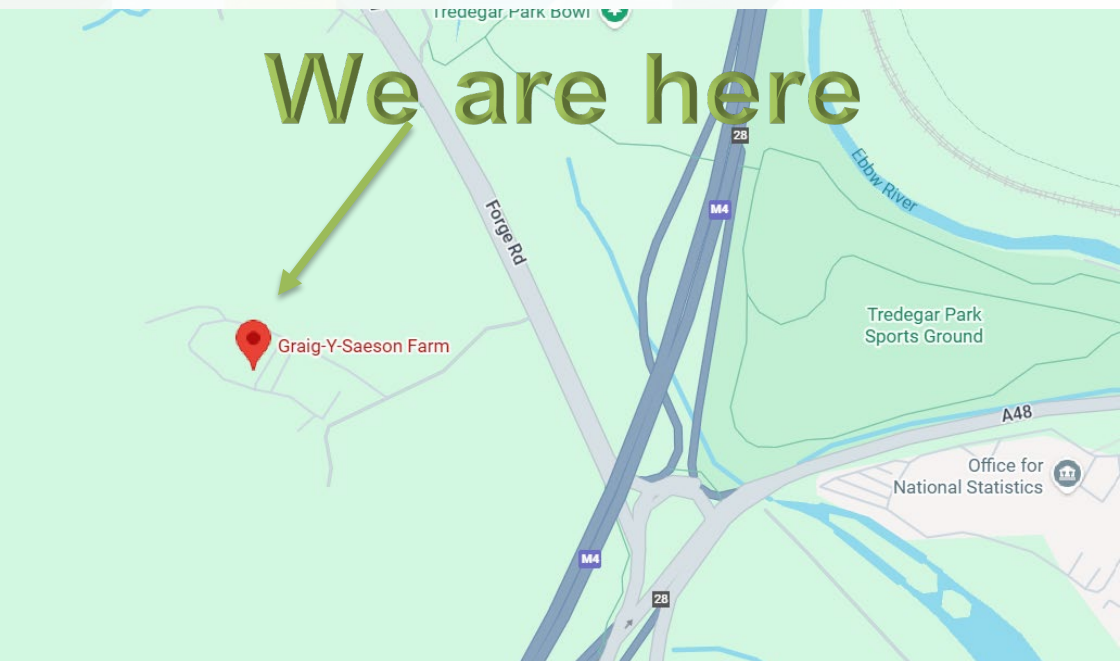
August 2027						
M	T	W	T	F	S	S
						1
2	3	4	5	6	7	8
9	10	11	12	13	14	15
16	17	18	19	20	21	22
23	24	25	26	27	28	29
30	31					

School Holidays

INSET (5)

Other school closures/bank holidays

Contact Details:




We are here

Headteacher —Creslyn Singh

Greenfield School

Graig-Y-Saeson Farm,

Forge Road, Bassaleg, Newport, South Wales, NP10 8AT

 **T: 01633 259019 | M: 07471 036920**

school.admin@caretech-uk.com

[@Greenfieldssch3](https://twitter.com/Greenfieldssch3)

<https://greenfields.uk.com/education/>

